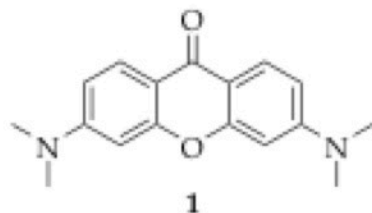


proton



8.062
8.047

6.658
6.643
6.422

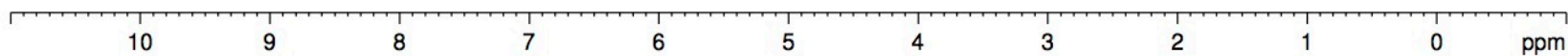
3.046

Current Data Parameters
NAME KAS-2020-010
EXPNO 2
PROCNO 999

F2 - Acquisition Parameters
Date_ 20200109
Time 17.53
INSTRUM av600
PROBHD 5 mm BB5
PULPROG zg30
TD 65536
SOLVENT CDCl3
NS 8
DS 0
SWH 12376.237 Hz
FIDRES 0.188846 Hz
AQ 2.6476543 sec
RG 181
DW 40.400 usec
DE 6.50 usec
TE 295.1 K
D1 2.00000000 sec
TD0 1

==== CHANNEL f1 =====
NUC1 1H
P1 16.50 usec
PL1 -1.00 dB
PL1W 31.62277603 W
SFO1 600.1336008 MHz

F2 - Processing parameters
SI 65536
SF 600.1300284 MHz
WDW EM
SSB 0
LB 0.30 Hz
GB 0
PC 1.00



2.000

1.994
2.030

12.346